



Borough of Tamworth

Marmion House,
Lichfield Street, Tamworth,
Staffordshire B79 7BZ.

Enquiries: 01827 709 709
Facsimile: 01827 709 271

**INFRASTRUCTURE, SAFETY AND GROWTH
SCRUTINY COMMITTEE**

2 October 2023

Dear Councillor

A Meeting of the Infrastructure, Safety and Growth Scrutiny Committee will be held in **Town Hall, Market Street, Tamworth on Tuesday, 10th October, 2023 at 6.00 pm.** Members of the Committee are requested to attend.

Yours faithfully

A handwritten signature in black ink, consisting of stylized initials and a long horizontal line extending to the right.

Chief Executive

A G E N D A

NON CONFIDENTIAL

- 1 Apologies for Absence**
- 2 Declarations of Interest**

To receive any declarations of Members' interests (personal and/or personal and prejudicial) in any matters which are to be considered at this meeting.

When Members are declaring a personal interest or personal and prejudicial interest in respect of which they have dispensation, they should specify the nature of such interest. Members should leave the room if they have a personal and prejudicial interest in respect of which they do not have a dispensation.

3 Update from the Chair

4 Responses to Reports of the Infrastructure Safety & Growth Committee

Update on responses received to Reports of the Infrastructure Safety & Growth Committee:

5 Consideration of Matters referred to the Infrastructure Safety & Growth Committee from Cabinet or Council

(Discussion item)

6 Dual Stream (Recycling Service) Quarterly Update (Pages 5 - 24)

(To receive a quarterly update on the dual stream recycling service)

7 Forward Plan

(Discussion item – link to Forward Plan is attached)

[Browse plans - Cabinet, 2023 :: Tamworth Borough Council](#)

8 Working Group Updates

To receive updates from any Working Groups

9 Infrastructure Safety & Growth Scrutiny Committee Work Plan

(Update and discussion on the Infrastructure Safety & Growth Scrutiny Work Plan)

10 Exclusion of the Press and Public

To consider excluding the Press and Public from the meeting by passing the following resolution:-

“That in accordance with the provisions of the Local Authorities (Executive Arrangements) (Meeting and Access to Information) (England) Regulations 2012, and Section 100A(4) of the Local Government Act 1972, the press and public be excluded from the meeting during the consideration of the following business on the grounds that it involves the likely disclosure of exempt information as defined in paragraphs 3 of Part 1 of Schedule 12A to the Act and the public interest in withholding the information outweighs the public interest in disclosing the information to the public”

11 FHSF Update (Pages 25 - 28)

(Report of the Leader of the Council)

12 Off Street Car Parking Tariff and Structure Review (Pages 29 - 58)

(Report of the Portfolio Holder for Town Centre and Commercial Property)

Access arrangements

If you have any particular access requirements when attending the meeting, please contact Democratic Services on 01827 709267 or e-mail democratic-services@tamworth.gov.uk. We can then endeavour to ensure that any particular requirements you may have are catered for.

Filming of Meetings

The public part of this meeting may be filmed and broadcast. Please refer to the Council's Protocol on Filming, Videoing, Photography and Audio Recording at Council meetings which can be found [here](#) for further information.

If a member of the public is particularly concerned about accidental filming, please contact a member of Democratic Services before selecting a seat

FAQs

For further information about the Council's Committee arrangements please see the FAQ page [here](#)

To Councillors: C Dean, B Clarke, R Claymore, T Clements, J Jones, J Oates, B Price, R Pritchard, L Wood, P Turner, T Jay and P Thompson

This page is intentionally left blank

INFRASTRUCTURE SAFETY AND GROWTH COMMITTEE

10th October 2023

Report of the Operations Manager

Dual Stream Recycling Service Performance Update and Data

Background

The purpose of this report is to provide the Committee with an update on Joint Waste Service Operations.

A breakdown of the Joint Waste Service performance data is attached as Appendix A and the trends are discussed:

*When referring to Appendix A an average of the 5 months in this financial year (April to August) is being used for comparison unless stated otherwise.

A breakdown of performance Data for Staffordshire Authorities is attached as Appendix B and discussed. This data was shared at the Staffordshire Sustainability Board in September:

Operational Performance

Performance across the Joint Waste Service is stable. All collection rounds are being completed on time unless there is an operational issue such as a breakdown or a road closure.

Crew numbers are stable across all services the recycling Service was being provided by an average 22.5 crews per day which is in line with the budget.

There is significant growth occurring across both Councils, with higher new property numbers in Lichfield. Currently the growth is being absorbed by efficiencies within the service. A review is planned for later this year to consider the impact of new housing developments in both Tamworth and Lichfield which will need to be factored into future rounds. Please note the JWS have reserves available to absorb the increased growth.

There was an average of 350 missed bins per month versus an average of 736 in the corresponding period last year. The service is conscious that it still misses bins of assisted collection at too higher rate and is working to address the issue.

An average of 1.6 complaints per month were received versus an average of 11.6 in the corresponding period the previous year.

There are ample additional blue bags for fibre collections available for residents. The blue bags have become an acceptable form of presenting paper and card for the vast majority of residents.

Resident Participation

Resident participation in the recycling service is very high with most properties presenting both a bin for the glass, cans and plastic and a bag for paper and card every fortnight. This presentation rate is between 98 and 99%.

In 2023 (calendar year), 44085 residents signed up to the Garden Waste Service. 35% of the total were Tamworth residents, with 65% being Lichfield residents. This is unsurprising due to the urban nature of Tamworth.

The number of contaminated bins reported for the 23/24 year so far is an average of 1595 per month versus an average of 3147 for the corresponding period the previous year. The Recycling Officers and crews continue to work with residents to minimise this number.

The quality of the material produced by the JWS is high since the service change. Since the change to dual stream only 1 load has been rejected at the Materials Recycling centre. For Qtr. 1 23/24 contamination rates of DMR (Plastic, cans, and glass) was 2.86%. Fibre was reported at 0% contamination.

Tonnage performance

The tonnage of both residual and recycling waste is stable as indicated on the graphs in appendix 1.

After the growth in residual waste tonnage over the Covid period, figures have settled down to an average 3122 tonnes per month so far, this financial year, versus 3051 tonnes in 22/23 and 3468 tonnes in 21/22. This is relevant as reducing residual tonnage is beneficial to all.

The headline recycling rate that includes garden waste was 40.59% for 2022/23 compared to 43.4% for the previous year. The reduction is in line with national trends and the garden waste yield was impacted by the long hot Summer last year. It will be interesting to see how the recycling rate changes in 2023/24 due to the changes in garden waste tonnage.

In the financial year so far, the JWS has collected 1213 tonnes of dry recycling versus 1270 tonnes in the same period of the previous year. This follows a national trend of a steady decline in dry recycling and is an area it is advisable to look for improvements.

The total tonnage of dry recycle collected from the kerbside in 2022/23 has fallen 18% compared to 21/22. A total of 15,213 tonnes was collected in 2022/23 and 18,395 tonnes the previous year. The reduction is significant but does coincide with the country coming out of lockdown and we are now experiencing a cost-of-living crisis. There has also been a 10% reduction in residual tonnages over the same period.

A substantial residents engagement campaign is currently being planned which aims to improve performance by explaining the benefits of recycling correctly, for both the community and the environment.

Several slides of Residual and Recycling tonnage reported across Staffordshire have been attached in Appendix B. These are to allow opportunities for Members to analyse and compare performance versus our Staffordshire family.

Tamworth produced an overall recycling rate of 40.3% in 2022/23 versus a Staffordshire average of 44%, and a high at Staffordshire Moorlands of 55.1%.

Tamworth produced the highest dry recycling rate in Staffordshire for the past 3 years. In 2022/23 the achieved a dry recycling rate of 27.4%, versus a Staffordshire average of 23%. Please note the figures is influenced by a lower % of garden waste.

In 2022/23 Tamworth had a green composting rate of 12.8% versus a Staffordshire average of 20%. The low rate is predominantly apportioned to the density of Tamworth as a Borough, versus some of its 'leafier' neighbours.

The average weight of residual waste collected per household was 129.4kgs in Tamworth, this is on target with the average across Staffordshire. The two highest performers, Staffs Moorlands and Newcastle-under-Lyme provide food waste collections.

The graphs demonstrate the general trend in falling recycling rates.

Financial Performance

There was a £194,990 overspend on the Joint Waste Service budget in 2022/23. Whilst income levels were strong, there were significant increases in driver pay, agency rates, additional infrastructure on the Recycling Service and fuel. New property growth in both Tamworth and Lichfield has also had an impact on the budget. The overspend has been funded from the Joint Waste Service Reserve with Tamworth's share being £79,770.

Budget monitoring indicates the JWS is on track versus budget for 2023/24. Figures for recycling credits for Q2 are due shortly. The anticipated financial outturn for the financial year will be more accurate at this point, but it fully expected there will be cause for alarm.

Joint Waste Service Projects

Several important projects are currently underway or will be completed over the next few months. These include:

- Potential launch of new recycling campaign
- Completion of the migration of flats and HMOs onto the new dual stream recycling service (nearing completion)
- Completion of the round review (to be revisited early 2024)
- Options appraisal for the proposed mandatory weekly collection of food waste
- Fleet review and procurement
- Workforce plan
- Review of the commercial waste service
- The development of a citizen's app is being considered (Potentially only LDC).

Regular updates on the progress of each of these projects will be reported to the Committee.

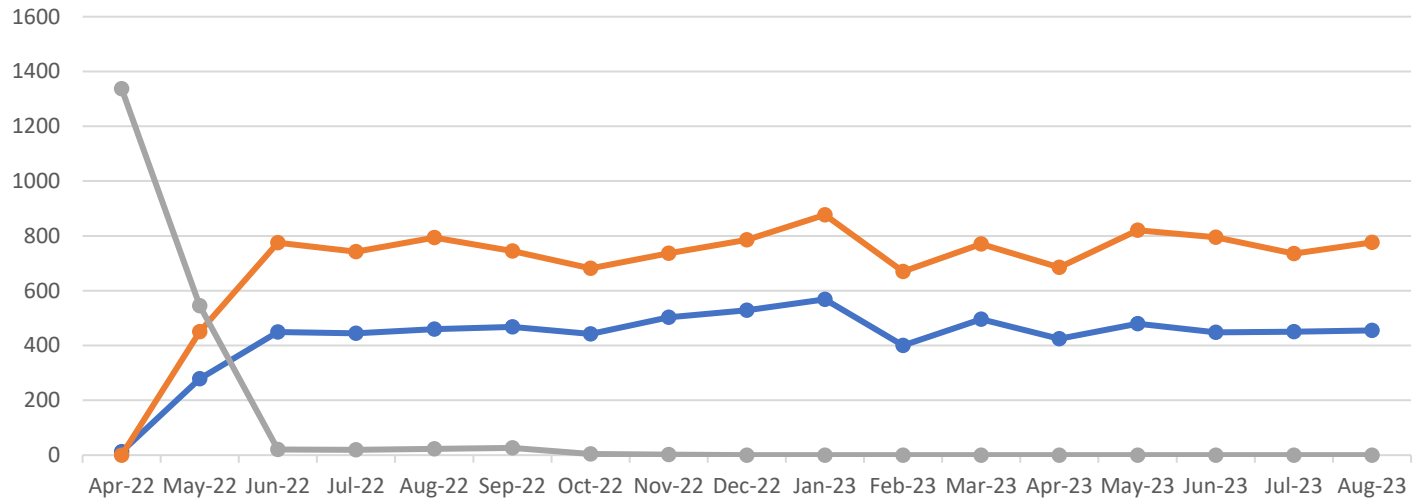
Recommendation

That the Committee:

- 1. Note the update on the performance of the Dual Stream Recycling Service**

APPENDIX A - JOINT WASTE PERFORMANCE DATA

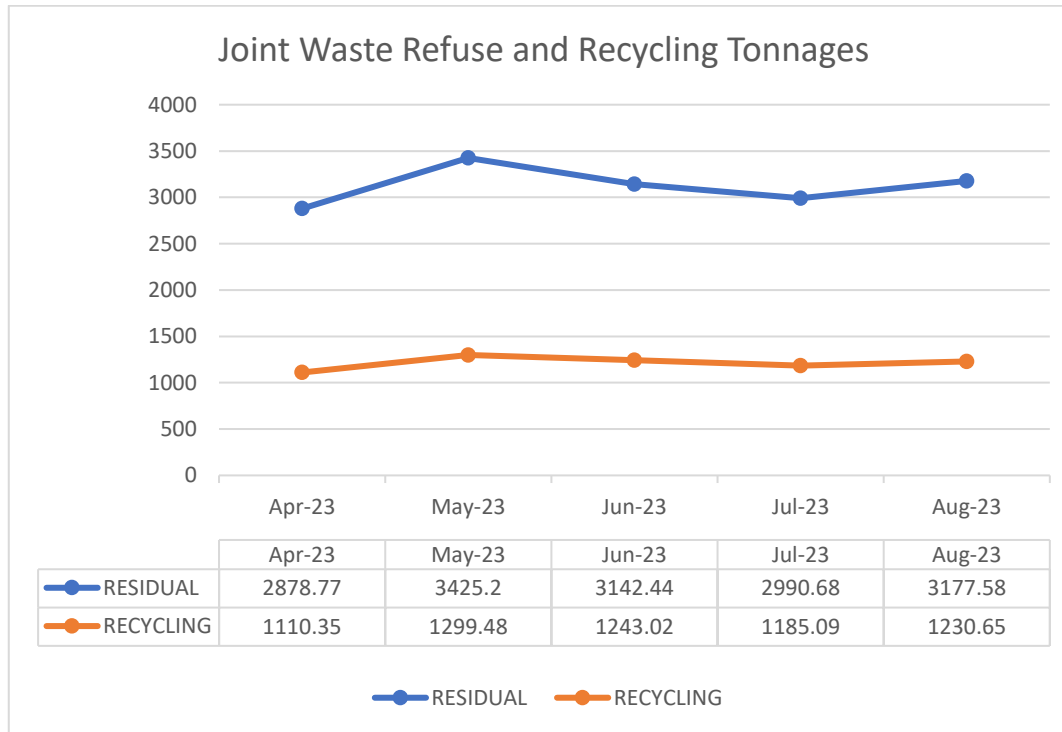
Joint Waste Dual Stream Tonnages



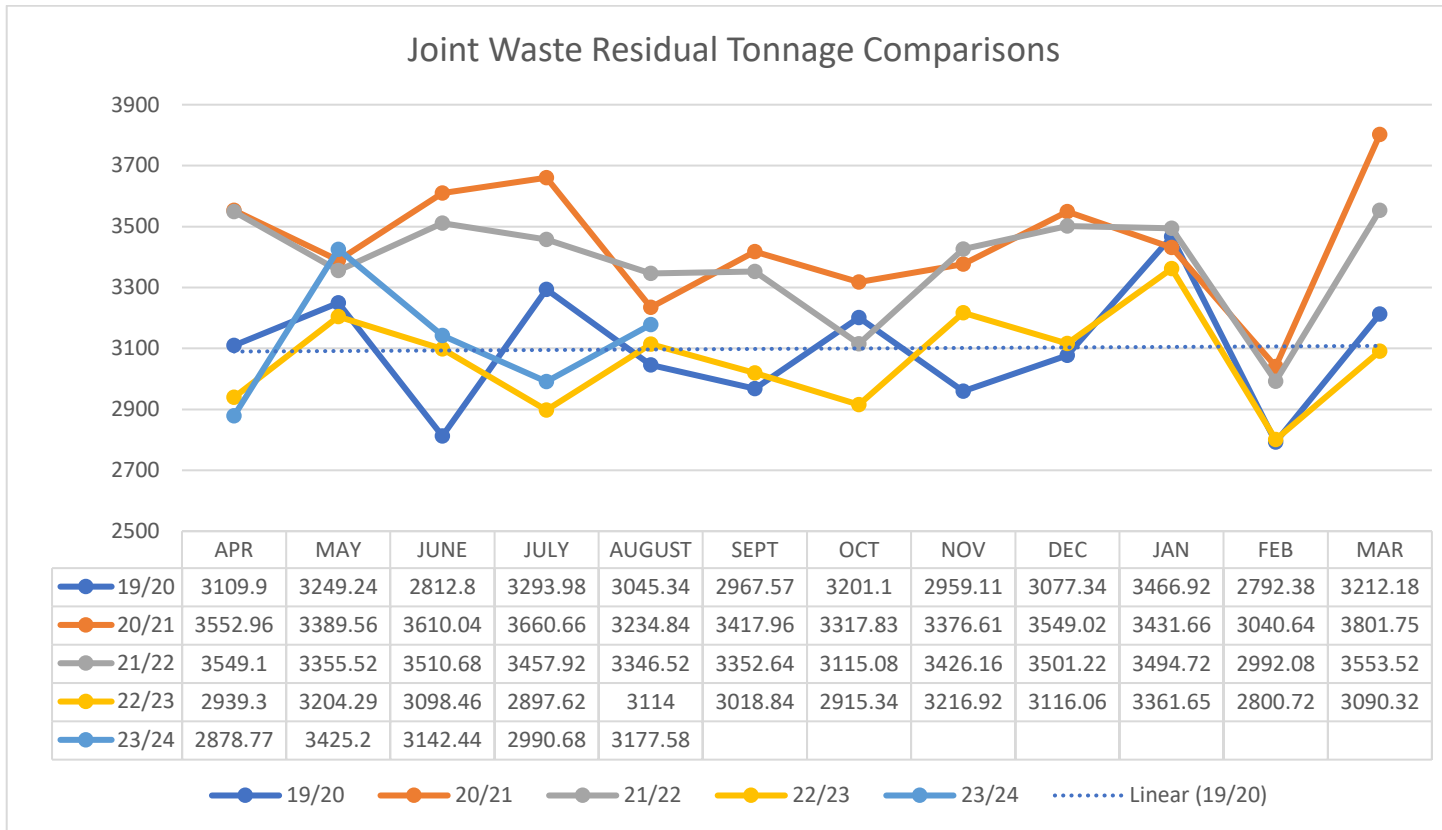
	Apr-22	May-22	Jun-22	Jul-22	Aug-22	Sep-22	Oct-22	Nov-22	Dec-22	Jan-23	Feb-23	Mar-23	Apr-23	May-23	Jun-23	Jul-23	Aug-23
PAPER & CARD	12.68	278.56	449.08	443.98	459.3	467.58	442.71	502.5	528.56	568.42	400.52	495.9	424.63	479.38	447.87	449.8	454.81
GLASS, CANS & PLASTIC	0	450.3	775.24	742.59	793.552	744.56	681.3	736.99	786.18	876.79	670.3	770.82	685.72	820.1	795.15	735.29	775.84
CO-MINGLED	1337.1	545.18	20.4	19.22	23.38	25.82	3.82	1.38	0	0	0	0	0	0	0	0	0

● PAPER & CARD
 ● GLASS, CANS & PLASTIC
 ● CO-MINGLED

APPENDIX A - JOINT WASTE PERFORMANCE DATA

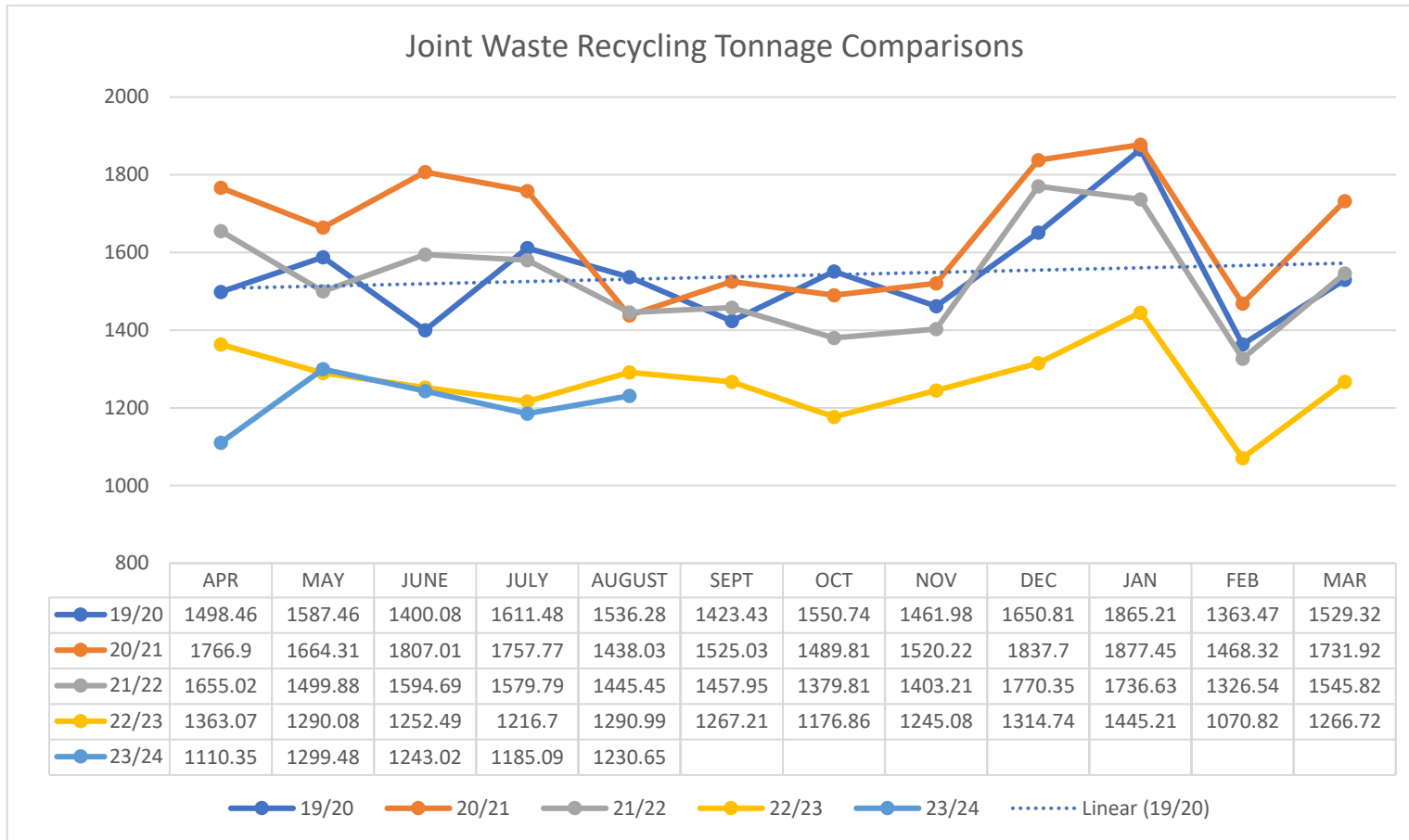


APPENDIX A - JOINT WASTE PERFORMANCE DATA



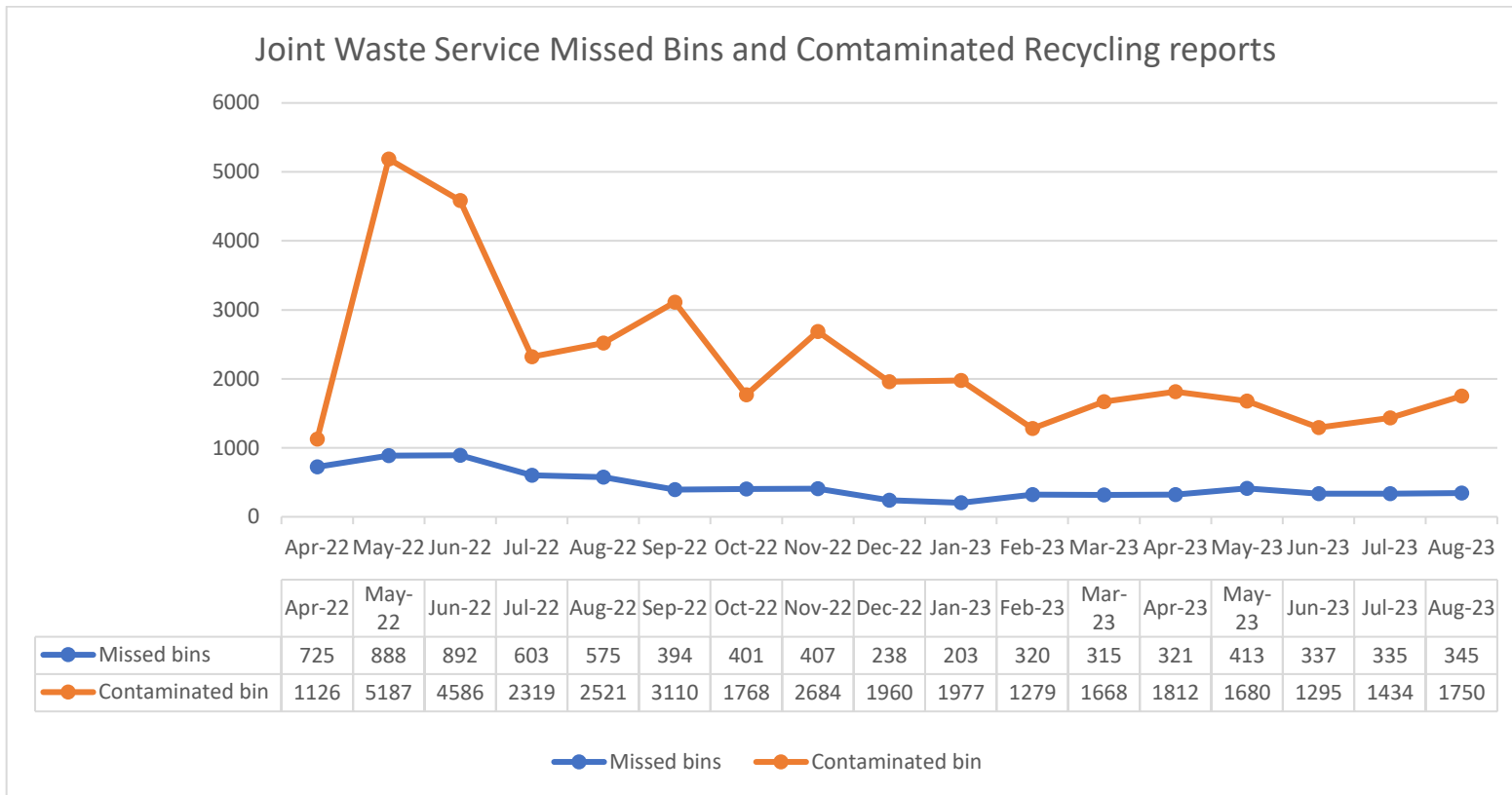
Year	Total Residual Tonnage
2019/20	37,187.86
2020/21	41,383.53
2021/22	40,655.16
2022/23	36,773.52

APPENDIX A - JOINT WASTE PERFORMANCE DATA

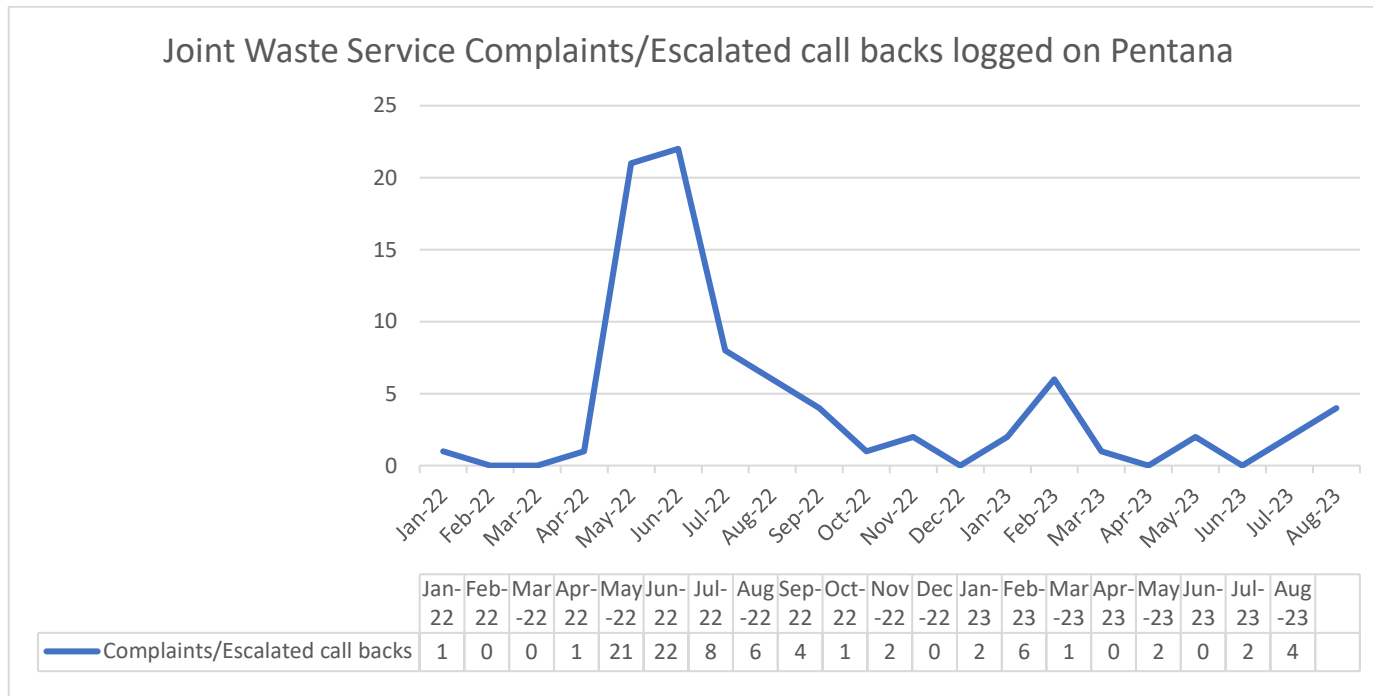


Year	Total Dry Recycling Tonnage	Recycling Rate including Garden Waste
2019/20	18,478.72	45.62%
2020/21	19,884.47	44.99%
2021/22	18,395.14	43.4%
2022/23	15,199.97	40.59%

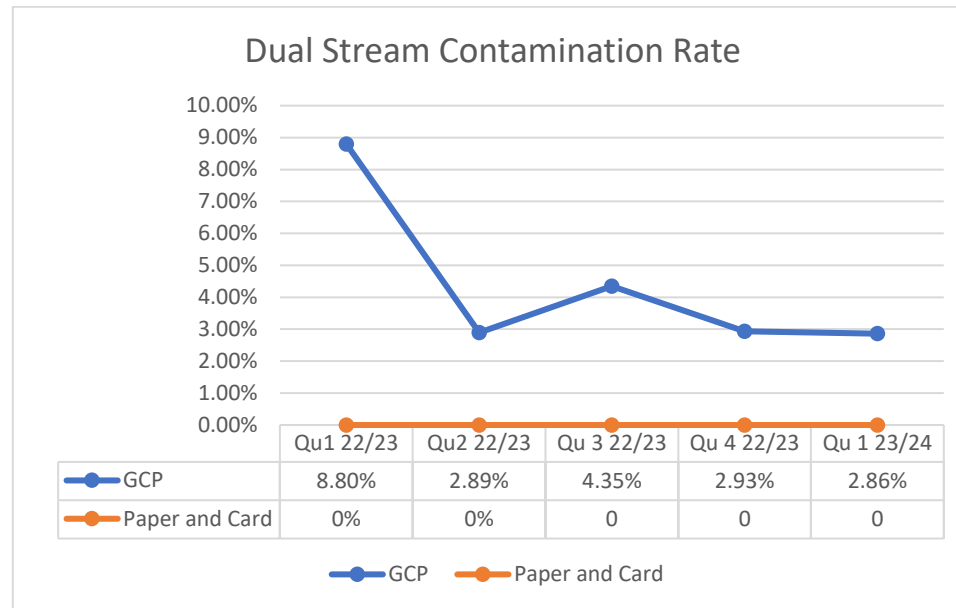
APPENDIX A - JOINT WASTE PERFORMANCE DATA



APPENDIX A - JOINT WASTE PERFORMANCE DATA



APPENDIX A - JOINT WASTE PERFORMANCE DATA



This page is intentionally left blank

Appendix 2: Staffordshire Waste Partnership – Waste Performance

Protective Marking Level 2 SCC Use Only



Performance reporting for SSB				Waste Collection Authorities										Waste Disposal Authority		Unitary Authority	SVR average	Year	Quarter	Parameter	
Performance parameter	Waste Data Flow categories	Year	Quarter	Cannock Chase DC	East Staffordshire BC	Lichfield DC	Newcastle-under-Lyme BC	Stafford BC	Staffordshire Moorlands DC	South Staffordshire DC	Tamworth BC	Staffordshire County Council	Stoke-on-Trent City Council	SVR average	Year	Quarter	Parameter				
Weight of residual waste collected per household (sent for incineration)	NI191: Residual household waste collected per household (kg)	2020 / 2021	Q1	141.2	141.0	129.3	138.9	123.0	99.3	131.1	135.4	142.7	164.9	135	2020 / 2021	Q1	Weight of residual waste collected per household				
			Q2	133.6	128.3	126.2	126.4	118.9	109.6	124.3	132.5	159.0	150.4	131		Q2					
		2021 / 2022	Q3	130.8	118.4	128.0	113.9	113.3	101.3	124.9	128.0	145.9	139.1	124	2021 / 2022	Q3					
			Q4	139.8	143.4	127.7	121.5	125.7	106.1	135.3	129.3	158.5	165.5	135		Q4					
		2022 / 2023	Q1	130.2	133.7	124.4	117.7	119.2	96.1	130.2	136.4	159.3	155.9	130	2022 / 2023	Q1					
			Q2	132.7	131.1	127.9	102.7	116.4	109.2	120.5	123.8	139.6	146.3	125		Q2					
		2023	Q3	121.7	140.5	124.8	107.6	115.9	103.3	131.5	124.8	145.6	133.7	125	2023	Q3					
			Q4	136.1	132.2	124.2	101.6	121.4	103.2	119.8	125.6	149.4	155.3	127		Q4					
		Total recycling rate (all waste streams)	NI192: % of household waste sent for reuse, recycling or composting	2020 / 2021	Q1	47.8%	47.2%	52.0%	39.3%	52.0%	63.0%	55.1%	41.1%	49.5%	30.8%	48%		2020 / 2021	Q1	Total recycling rate (all waste streams)	
					Q2	46.7%	49.5%	50.5%	44.6%	55.1%	57.8%	51.4%	43.2%	48.4%	39.4%	49%			Q2		
				2021 / 2022	Q3	38.9%	42.7%	45.2%	44.1%	48.1%	54.2%	44.7%	38.0%	43.9%	30.4%	43%		2021 / 2022	Q3		
					Q4	35.6%	35.7%	40.7%	40.8%	41.3%	49.2%	40.2%	37.5%	41.3%	39.6%	25.4%			39%		Q4
				2022 / 2023	Q1	46.7%	47.4%	49.9%	47.7%	50.7%	59.9%	48.7%	42.1%	46.8%	39.8%	48%		2022 / 2023	Q1		
					Q2	45.3%	46.2%	49.1%	52.5%	50.4%	57.2%	51.3%	43.6%	45.3%	39.1%	48%			Q2		
				2023	Q3	40.1%	37.2%	43.7%	46.0%	43.1%	40.8%	43.7%	50.5%	43.7%	42.4%	30.6%		41%	2023		Q3
					Q4	34.2%	34.6%	38.9%	42.3%	39.4%	48.8%	42.0%	36.6%	39.2%	26.3%	38%		Q4			
Percentage of waste sent to landfill	NI193: % of municipal waste landfilled			2020 / 2021	Q1									0.8%	6.9%	4%	2020 / 2021	Q1	Percentage of waste sent to landfill		
					Q2										2.7%	3.2%		3%			Q2
				2021 / 2022	Q3										0.9%	3.6%	2%	2021 / 2022			Q3
					Q4										1.0%	3.5%	2%				Q4
				2022 / 2023	Q1										3.6%	8.7%	6%	2022 / 2023			Q1
					Q2										1.5%	3.4%	2%				Q2
				2023	Q3										1.0%	1.2%	1%	2023			Q3
					Q4										2.0%	1.4%	2%				Q4
		Percentage of waste recycled (dry recyclable materials)	% household waste sent for recycling	2020 / 2021	Q1	19.8%	18.9%	24.7%	17.2%	20.6%	21.0%	20.2%	26.0%	20.7%	13.3%	20%	2020 / 2021	Q1		Percentage of waste recycled (dry recyclable materials)	
					Q2	19.1%	19.2%	23.2%	18.6%	20.8%	19.6%	20.9%	25.1%	20.9%	20.0%	21%		Q2			
				2021 / 2022	Q3	22.2%	22.3%	26.4%	22.3%	23.5%	21.8%	24.5%	22.3%	23.5%	21.2%	24%	2021 / 2022	Q3			
					Q4	24.3%	22.9%	29.1%	25.9%	28.3%		24.4%	31.2%	26.4%	23.7%	26%		Q4			
				2022 / 2023	Q1	21.2%	19.8%	23.8%	20.4%	22.9%	21.2%	16.0%	24.5%	21.9%	20.5%	21%	2022 / 2023	Q1			
					Q2	19.8%	19.7%	22.1%	20.4%	22.1%	18.1%	17.0%	25.5%	19.5%	21.4%	20%		Q2			
				2023	Q3	23.3%	20.9%	26.3%	22.0%	22.3%	19.1%	28.7%	27.6%	23.5%	21.0%	23%	2023	Q3			
					Q4	23.2%	23.4%	27.3%	23.0%	25.0%	24.5%	24.3%	30.1%	25.2%	21.0%	25%		Q4			
Percentage of waste composted (garden waste, or garden and food combined)	% household waste sent for composting			2020 / 2021	Q1	28.0%	28.3%	27.4%	22.0%	31.4%	42.0%	34.8%	19.1%	28.1%	17.4%	28%	2020 / 2021	Q1	Percentage of waste composted (garden waste, or garden and food combined)		
					Q2	27.3%	30.2%	27.3%	24.6%	34.3%	38.1%	30.5%	18.1%	27.4%	19.3%	28%		Q2			
				2021 / 2022	Q3	16.3%	20.4%	18.8%	18.5%	18.8%	18.3%	18.5%	24.9%	13.3%	18.5%	9.1%	18%	2021 / 2022			Q3
					Q4	11.0%	12.7%	11.6%	10.9%	13.1%	24.1%	15.8%	6.3%	13.1%	1.7%	12%	Q4				
				2022 / 2023	Q1	25.2%	27.5%	26.1%	22.6%	27.7%	38.7%	22.0%	17.2%	24.7%	19.2%	25%	2022 / 2023	Q1			
					Q2	25.1%	26.4%	27.1%	25.1%	29.4%	39.1%	24.0%	18.1%	25.6%	17.7%	26%		Q2			
				2023	Q3	16.4%	16.1%	16.8%	17.1%	21.4%	31.3%	22.4%	10.0%	18.7%	9.4%	18%	2023	Q3			
					Q4	11.0%	11.2%	11.5%	12.7%	14.4%	24.2%	17.6%	6.5%	13.9%	2.2%	13%		Q4			
		Percentage of waste sent for AD (food waste)	% household waste sent for anaerobic digestion (formerly part of BVPI 82b)	2020 / 2021	Q1				0.1%						0%	2020 / 2021	Q1	Percentage of waste sent for AD			
					Q2				1.4%								1%			Q2	
				2021 / 2022	Q3				3.3%								3%			2021 / 2022	Q3
					Q4				4.0%								4%				Q4
				2022 / 2023	Q1				4.9%								5%			2022 / 2023	Q1
					Q2				6.9%								7%				Q2
				2023	Q3				6.9%								7%			2023	Q3
					Q4				6.6%								0				Q4

Page 17

Appendix 2: Staffordshire Waste Partnership – Waste Performance

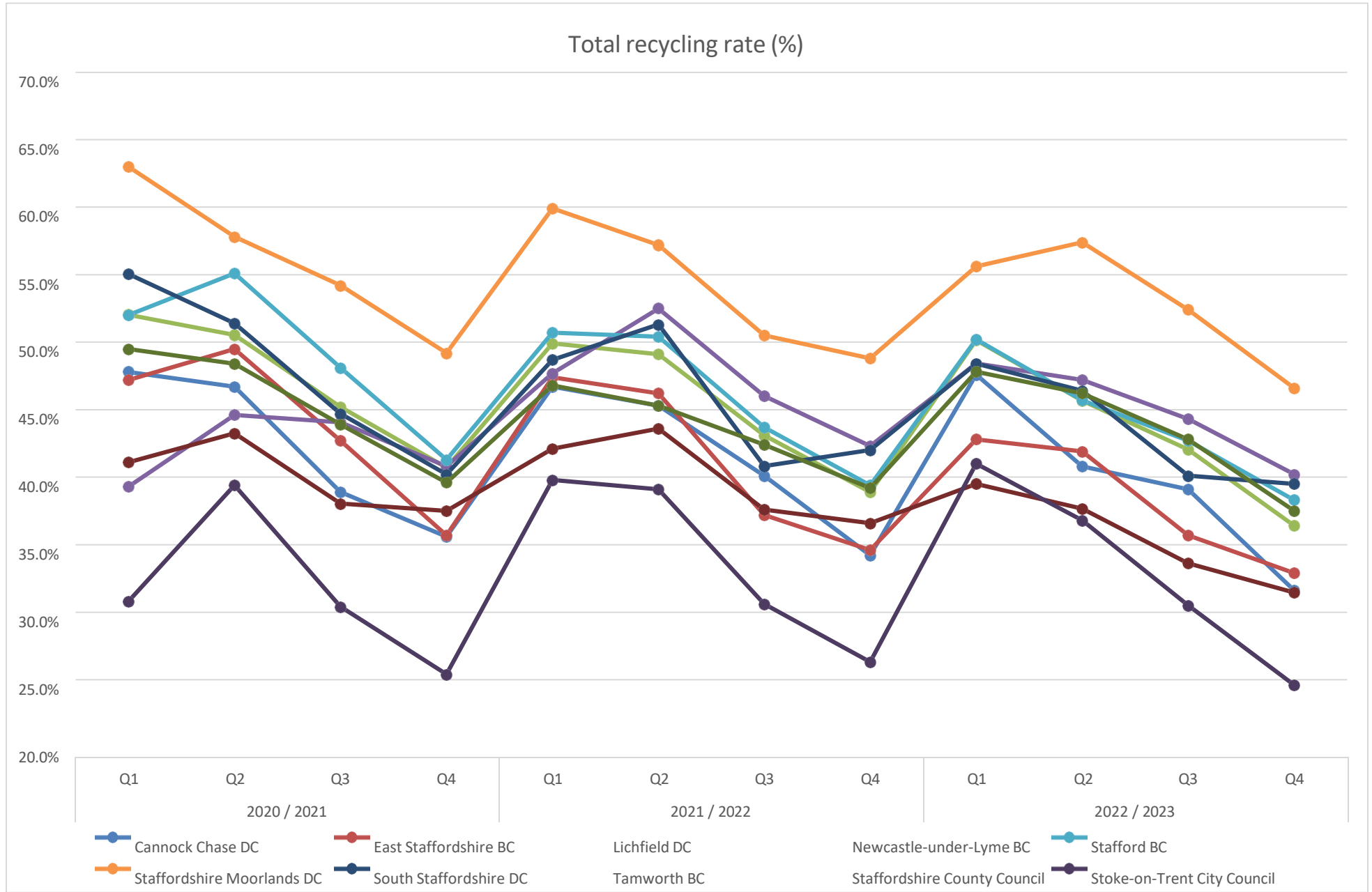
Performance parameter	Waste Data Flow categories	Year	Quarter	Cannock Chase DC	East Staffordshire BC	Lichfield DC	Newcastle-under-Lyme BC	Stafford BC	Staffordshire Moorlands DC	South Staffordshire DC	Tamworth BC	Staffordshire County Council	Stoke-on-Trent City Council	SWP average	Year	Quarter	Parameter
Performance reporting for SSB				Waste Collection Authorities									Waste Disposal Authority	Unitary Authority			

Appendix 2: Staffordshire Waste Partnership – Waste Performance

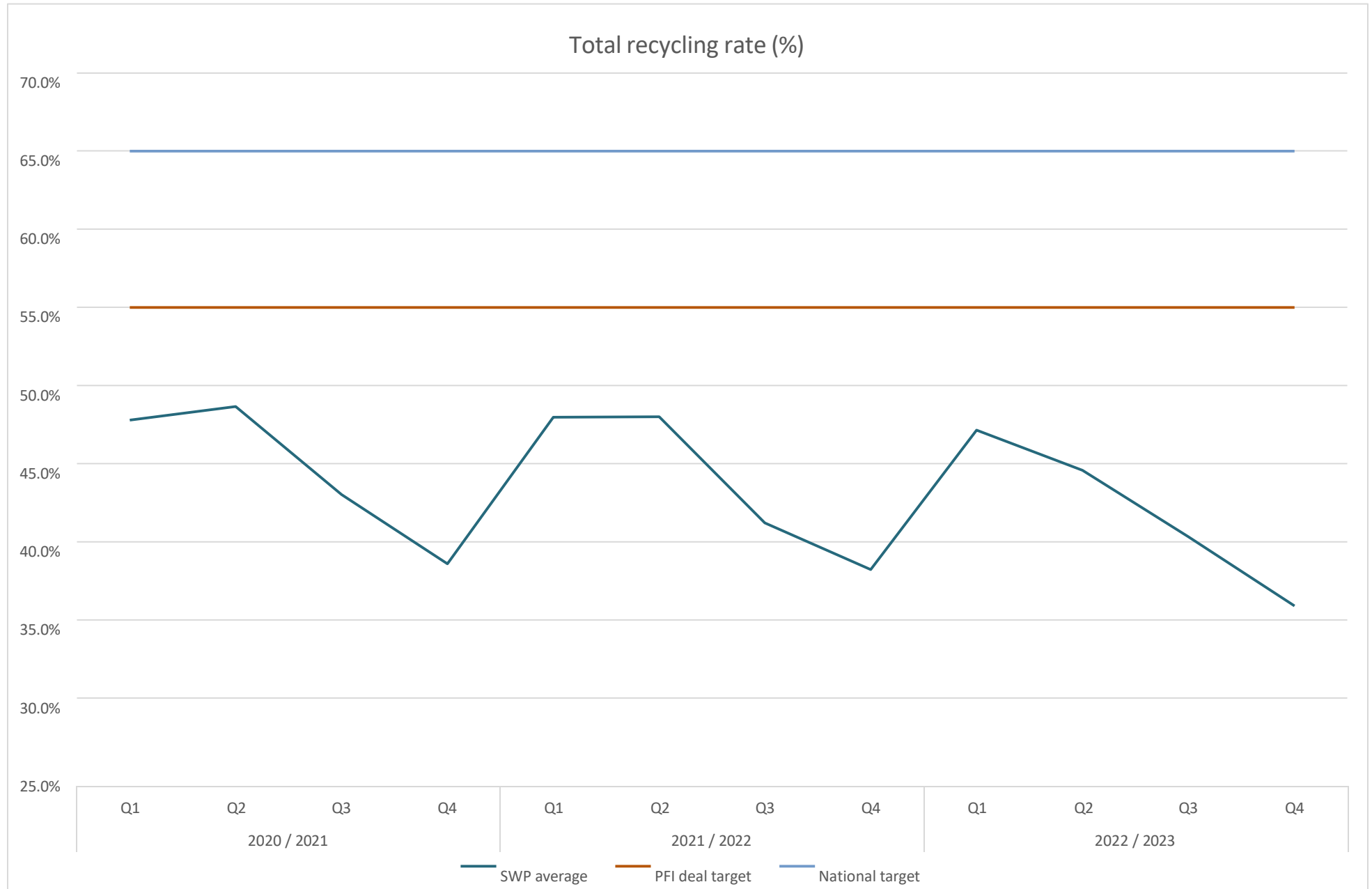
Performance reporting for SSB			Waste Collection Authorities								Waste Disposal Authority	Unitary Authority	SWP average		
Performance parameter	Waste Data Flow categories	Year	Cannock Chase DC	East Staffordshire BC	Lichfield DC	Newcastle-under-Lyme BC	Stafford BC	Staffordshire Moorlands DC	South Staffordshire DC	Tamworth BC	Staffordshire County Council	Stoke-on-Trent City Council	Year	Parameter	
Weight of residual waste collected per household (sent for incineration)	NI191: Residual household waste collected per household (kg)	2020 / 2021	136.4	132.8	127.8	125.2	120.2	104.1	128.9	131.3	151.5	155.0	131	Weight of residual waste collected per household	
		2021 / 2022	133.6	130.9	126.6	119.9	119.3	103.3	128.7	131.5	155.7	152.7	130		
		2022 / 2023	133.4	131.6	127.0	113.9	118.6	103.2	127.7	129.4	150.8	151.7	129		
			CCDC	ESBC	LDC	NuLBC	SBC	SMDC	SSDC	TBC	SCC	SoTCC			
Total recycling rate (all waste streams)	NI192: % of household waste sent for reuse, recycling or composting	2020 / 2021	42.3%	43.8%	47.1%	42.2%	49.1%	56.1%	47.8%	40.0%	45.4%	31.5%	45%	Total recycling rate (all waste streams)	
		2021 / 2022	42.0%	43.8%	46.6%	44.3%	48.8%	55.3%	46.2%	40.2%	44.7%	33.8%	45%		
		2022 / 2023	41.6%	43.0%	46.2%	46.3%	47.6%	55.1%	46.2%	40.3%	43.9%	33.7%	44%		
			CCDC	ESBC	LDC	NuLBC	SBC	SMDC	SSDC	TBC	SCC	SoTCC			
Percentage of waste sent to landfill	NI193: % of municipal waste landfilled	2020 / 2021									1.3%	4.3%	3%	Percentage of waste sent to landfill	
		2021 / 2022									2.0%	4.7%	3%		
		2022 / 2023									1.7%	4.8%	3%		
			CCDC	ESBC	LDC	NuLBC	SBC	SMDC	SSDC	TBC	SCC	SoTCC			
Percentage of waste recycled (dry recyclable materials)	% household waste sent for recycling	2020 / 2021	21.3%	20.8%	25.8%	21.0%	23.3%	20.8%	22.5%	27.7%	22.9%	19.5%	23%	Percentage of waste recycled (dry recyclable materials)	
		2021 / 2022	21.7%	21.1%	25.6%	21.8%	23.9%	20.9%	21.4%	27.3%	23.2%	21.4%	23%		
		2022 / 2023	21.9%	21.2%	25.4%	22.2%	23.9%	20.4%	27.4%	22.9%	21.7%	21.7%	23%		
			CCDC	ESBC	LDC	NuLBC	SBC	SMDC	SSDC	TBC	SCC	SoTCC			
Percentage of waste composted (garden waste, or garden and food combined)	% household waste sent for composting	2020 / 2021	20.7%	22.9%	21.3%	19.0%	25.9%	34.1%	23.6%	13.3%	22.1%	11.9%	21%	Percentage of waste composted (garden waste, or garden and food combined)	
		2021 / 2022	20.0%	22.7%	21.0%	19.1%	25.0%	33.3%	20.4%	12.8%	21.3%	12.3%	21%		
		2022 / 2023	19.4%	21.7%	20.9%	19.3%	23.8%	33.5%	18.8%	12.8%	20.8%	11.9%	20%		
			CCDC	ESBC	LDC	NuLBC	SBC	SMDC	SSDC	TBC	SCC	SoTCC			
Percentage of waste sent for AD (food waste)	% household waste sent for anaerobic digestion (formerly part of BVPI 82b)	2020 / 2021				2.2%							2%	Percentage of waste sent for AD (food waste)	
		2021 / 2022				3.4%							3%		
		2022 / 2023				4.8%							5%		
			CCDC	ESBC	LDC	NuLBC	SBC	SMDC	SSDC	TBC	SCC	SoTCC			
Performance parameter	Waste Data Flow categories	Year	Cannock Chase DC	East Staffordshire BC	Lichfield DC	Newcastle-under-Lyme BC	Stafford BC	Staffordshire Moorlands DC	South Staffordshire DC	Tamworth BC	Staffordshire County Council	Stoke-on-Trent City Council	SWP average	Year	Parameter
Performance reporting for SSB			Waste Collection Authorities								Waste Disposal Authority	Unitary Authority			

Appendix 2: Staffordshire Waste Partnership – Waste Performance

Page 20
Page 73

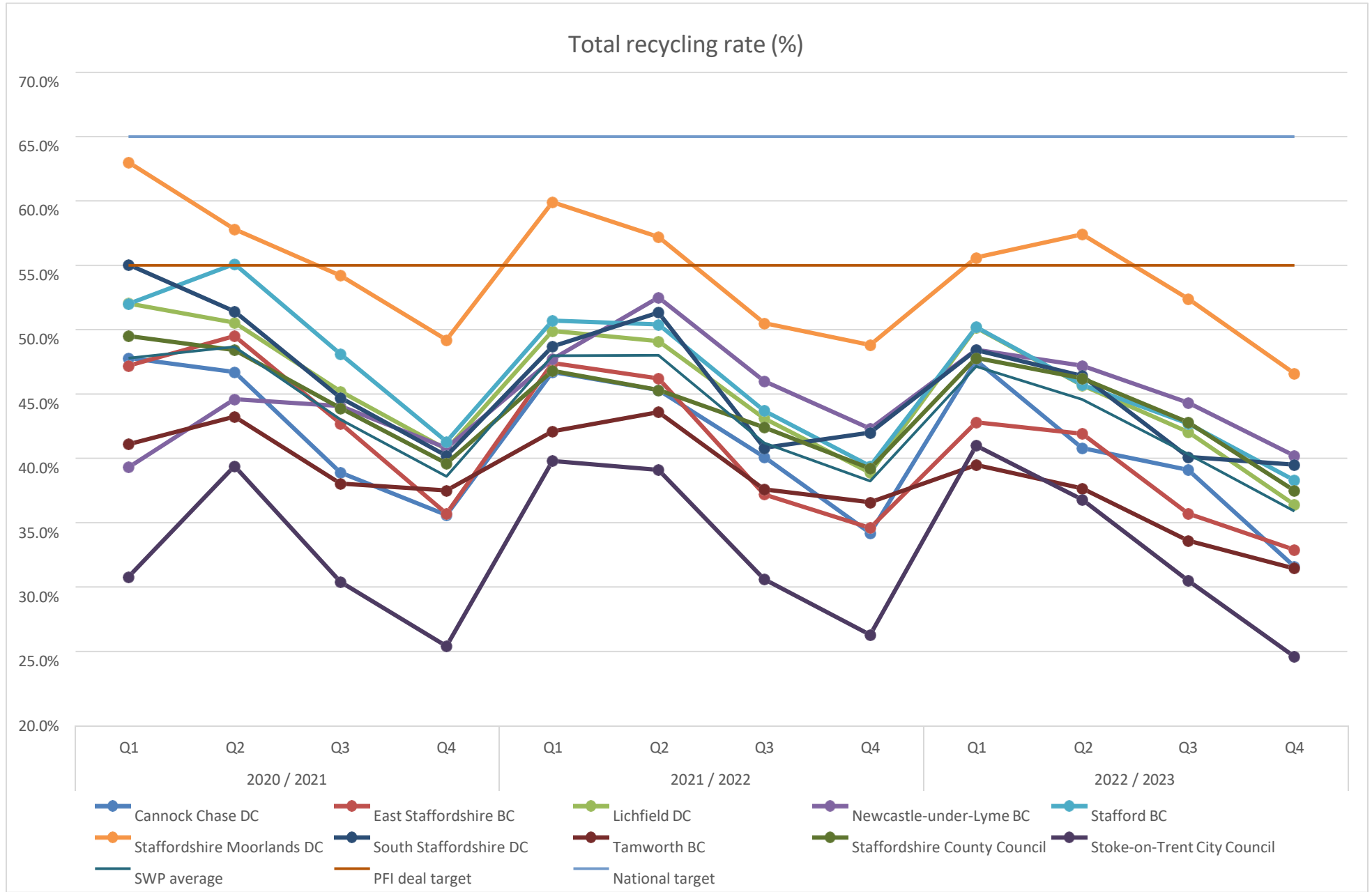


Appendix 2: Staffordshire Waste Partnership – Waste Performance



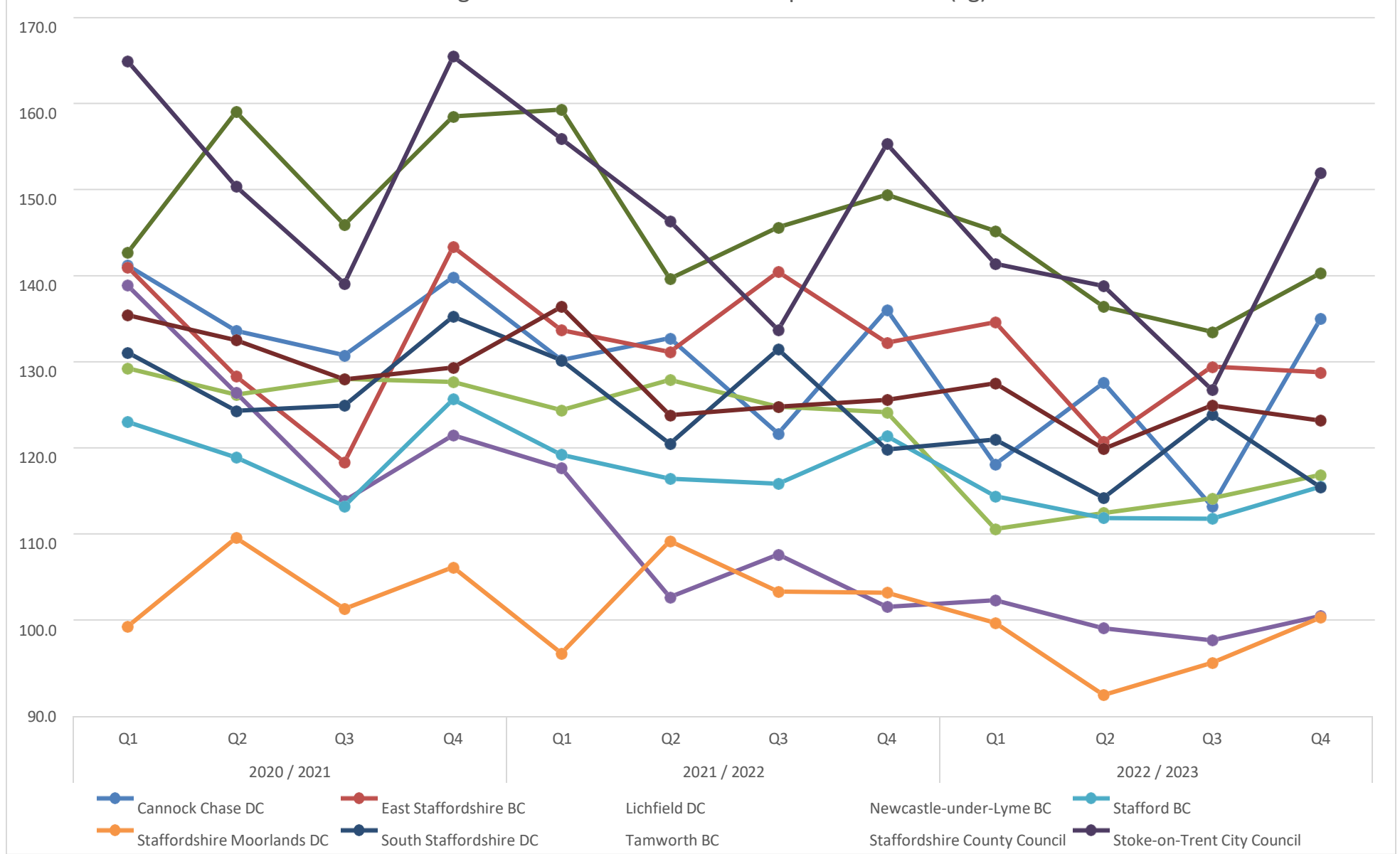
Appendix 2: Staffordshire Waste Partnership – Waste Performance

Page 22
Page 75



Appendix 2: Staffordshire Waste Partnership – Waste Performance

Weight of residual waste collected per household (kg)



By virtue of paragraph(s) 3 of Part 1 of Schedule 12A of the Local Government Act 1972.

Document is Restricted

This page is intentionally left blank

By virtue of paragraph(s) 3 of Part 1 of Schedule 12A of the Local Government Act 1972.

Document is Restricted

This page is intentionally left blank

By virtue of paragraph(s) 3 of Part 1 of Schedule 12A
of the Local Government Act 1972.

Document is Restricted

This page is intentionally left blank

By virtue of paragraph(s) 3 of Part 1 of Schedule 12A
of the Local Government Act 1972.

Document is Restricted

This page is intentionally left blank

By virtue of paragraph(s) 3 of Part 1 of Schedule 12A
of the Local Government Act 1972.

Document is Restricted

This page is intentionally left blank

By virtue of paragraph(s) 3 of Part 1 of Schedule 12A
of the Local Government Act 1972.

Document is Restricted

This page is intentionally left blank